

37, 082 TDW product tanker

# M/T FUREVIK

Furetank Rederi AB, Donsö, Sweden

Year: 2005/ Jinling Shipyard



## Dimension

Length over all--- 185,6 m  
Breadth----- 31,0 m  
Depth ----- 16,2 m  
Draft----- 10,6 m

## Tonnage

DWT Summer --- 37,082 mt  
Gross ----- 26,634 t  
Netto ----- 10,205 t

## Capacity

Cargo 98% ----- 45,847 cu.m  
Ballast ----- 18,293 cu.m  
HFO ----- 1378,6 cu.m  
Do ----- 233,5 cu.m  
FW----- 419/90/644 cu.m

## Heating

Cargo tank----- Heat ex  
Slop tanks ----- Coils

## Pumps

Cargo pumps ----- 16x500 cu/h  
Slop pumps ----- 2x300 cu/h  
Ballast pumps ----- 2x1000 cu/h  
Discharge cap----- 4000 cu/h

## Machinery

Main engine----- 8,580 Kw  
Aux eng ----- 3x990 Kw  
Steam boilers----- 22,000 kg/h  
Bowthruster ----- 1000 Kw  
Speed ----- 14,5 Kn

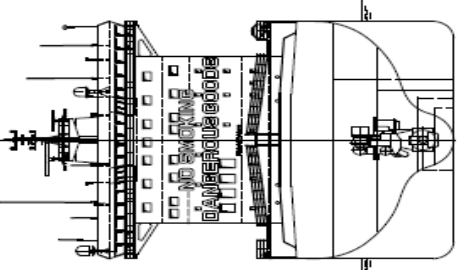
## Class: Bureau Veritas

Hull; Mach; Oil tanker ESP;  
Chemical tanker ESP;  
Unrestricted navigation;  
VeriSTAR-Hull; Aut-UMS;  
SYS-NEQ-1; MON-SHAFT;  
Clean Ship 3; ICE CLASS 1C;  
ERS-S; INWATERSURVEY; VCS;  
SDS; IG

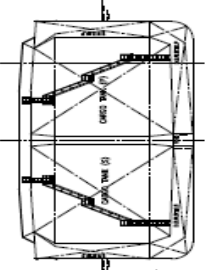


## FURETANK REDERI AB

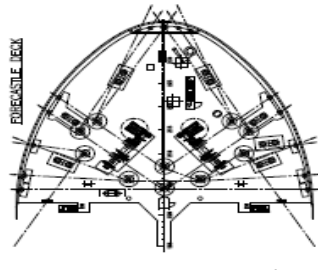
Telephone +46 31 97 32 70 (24 h)  
Fax +46 31 97 32 71  
e-mail [furetank@furetank.se](mailto:furetank@furetank.se)



MIDSHIP SECTION



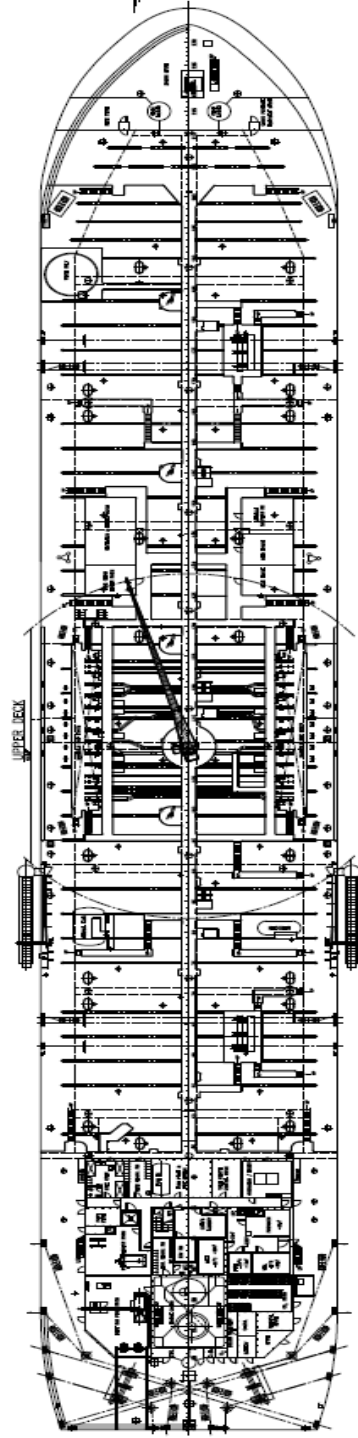
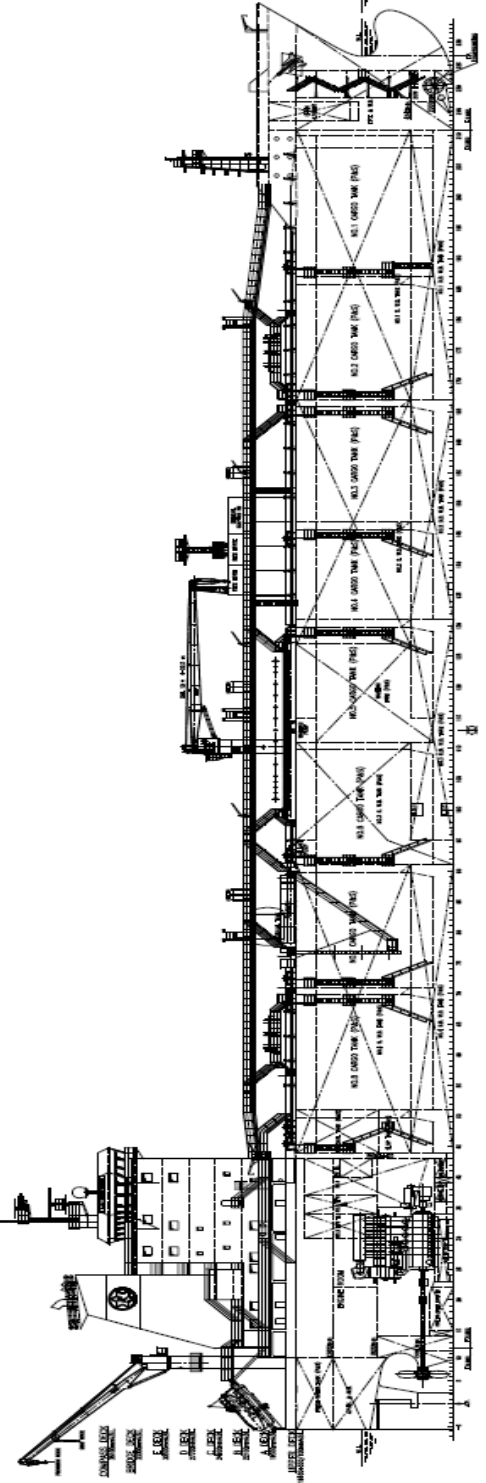
FORECASTLE DECK



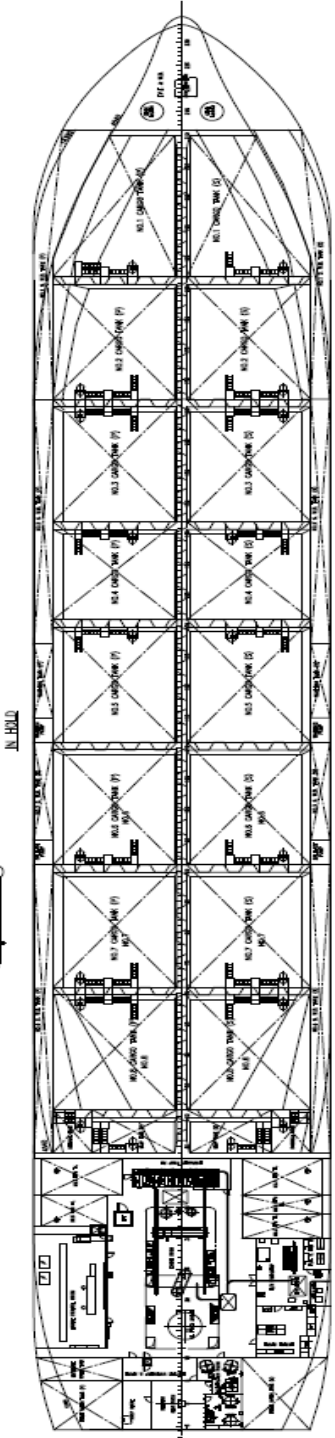
PRINCIPAL DIMENSIONS

DESIGNER	NAVY DEPT. ARCHITECTURE
DATE	1917
SCALE	AS SHOWN
PROJECT	USS SCOUT NO. 107
NO. OF SHEETS	12
SHEET NO.	1
APP'D.	[Signature]
CHECK'D.	[Signature]
DATE	1917

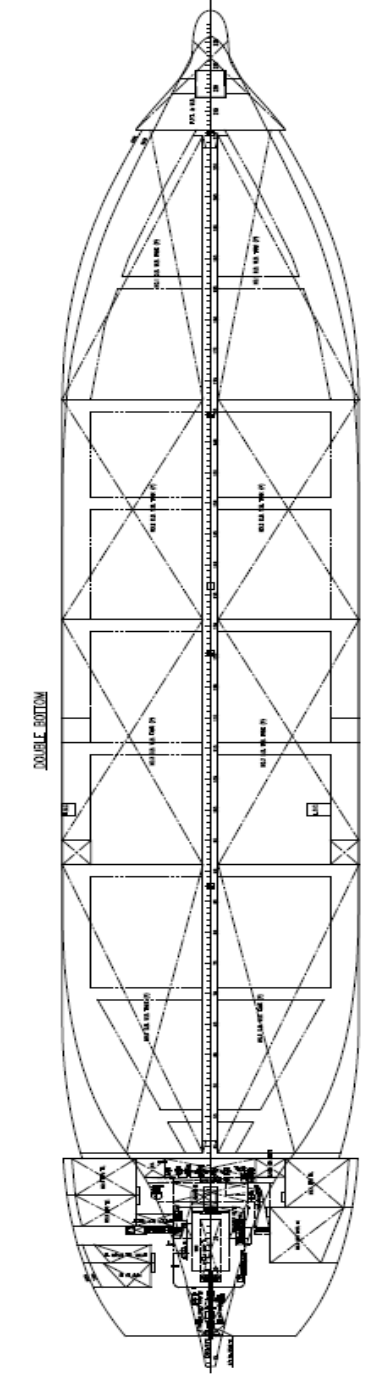
SHIP NAME	USS SCOUT NO. 107
CLASS	SCOUT
YEAR BUILT	1917
LENGTH	41.36 M (135 FT 11 IN)
BEAM	10.10 M (33 FT 2 IN)
DRAFT	3.00 M (9 FT 8 IN)
DISPLACEMENT	1,200 TONS
CRUISING SPEED	12.00 KNOTS
MAX SPEED	15.00 KNOTS
LENGTH AT BOW	12.00 M (39 FT 4 IN)
LENGTH AT STEERAGE	12.00 M (39 FT 4 IN)
LENGTH AT MIDSHIP	12.00 M (39 FT 4 IN)
LENGTH AT AFT	12.00 M (39 FT 4 IN)
HEIGHT OF MAIN MAST	15.00 M (49 FT 3 IN)
HEIGHT OF MAST AT BOW	12.00 M (39 FT 4 IN)
HEIGHT OF MAST AT STEERAGE	12.00 M (39 FT 4 IN)
HEIGHT OF MAST AT AFT	12.00 M (39 FT 4 IN)
HEIGHT OF MAIN MAST AT BOW	12.00 M (39 FT 4 IN)
HEIGHT OF MAIN MAST AT STEERAGE	12.00 M (39 FT 4 IN)
HEIGHT OF MAIN MAST AT AFT	12.00 M (39 FT 4 IN)



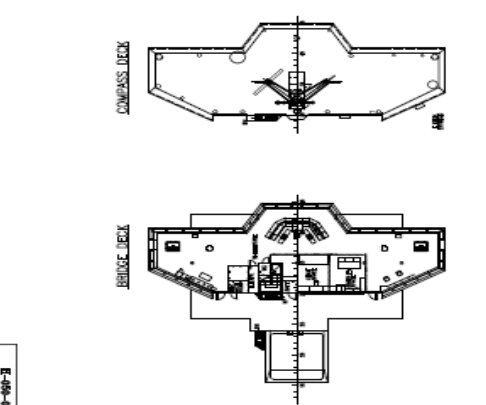
UPPER DECK



MIDSHIP PLAN

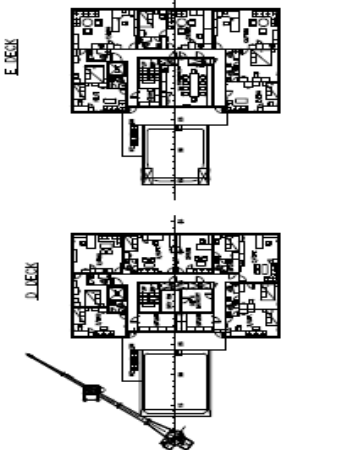


DOUBLE BOTTOM



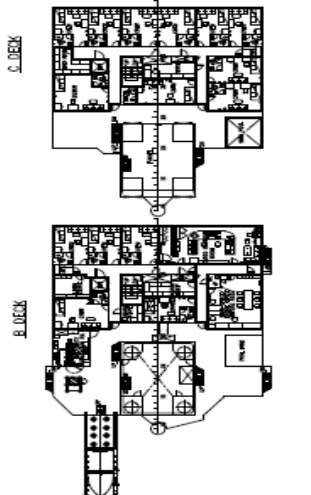
BRIDGE DECK

COMBESS DECK



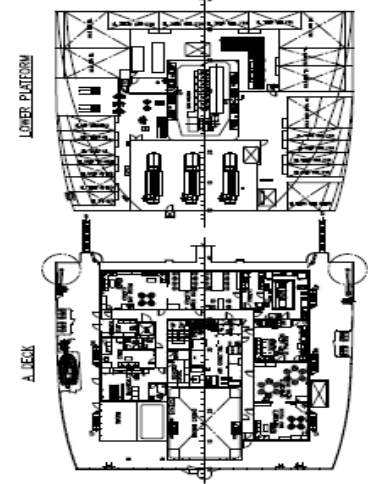
E DECK

D DECK



C DECK

B DECK



LOWER PLATFORM

A DECK